

CPK TOOL

User Manual

Version

<http://www.smartspc.com>

Table of Contents

| | | |
|-------|------------------------------|---|
| 1. | ABOUT CPK TOOL..... | 3 |
| 2. | SOFTWARE INSTALLATION..... | 3 |
| 3. | CPK TOOL FEATURES..... | 3 |
| 3.1 | CPK Tool Layout..... | 3 |
| 3.2 | Data Entry..... | 4 |
| 3.2.1 | Clear Data..... | 4 |
| 3.2.2 | Data Entry..... | 4 |
| 3.3 | Capability Analysis..... | 5 |
| 3.3.1 | Analysis Option..... | 5 |
| 3.3.2 | Histogram..... | 7 |
| 3.4 | New, Open and Save File..... | 7 |
| 3.5 | Generating a Report..... | 8 |
| 3.6 | About CPK Tool..... | 8 |
| 4. | GETTING HELP..... | 9 |

1. ABOUT CPK TOOL

CPK Tool is a capability analysis tool. No installation is needed, simply download and start using it immediately. And the analysis result and histogram can be exported to spreadsheets, so user can create the analysis report quickly.

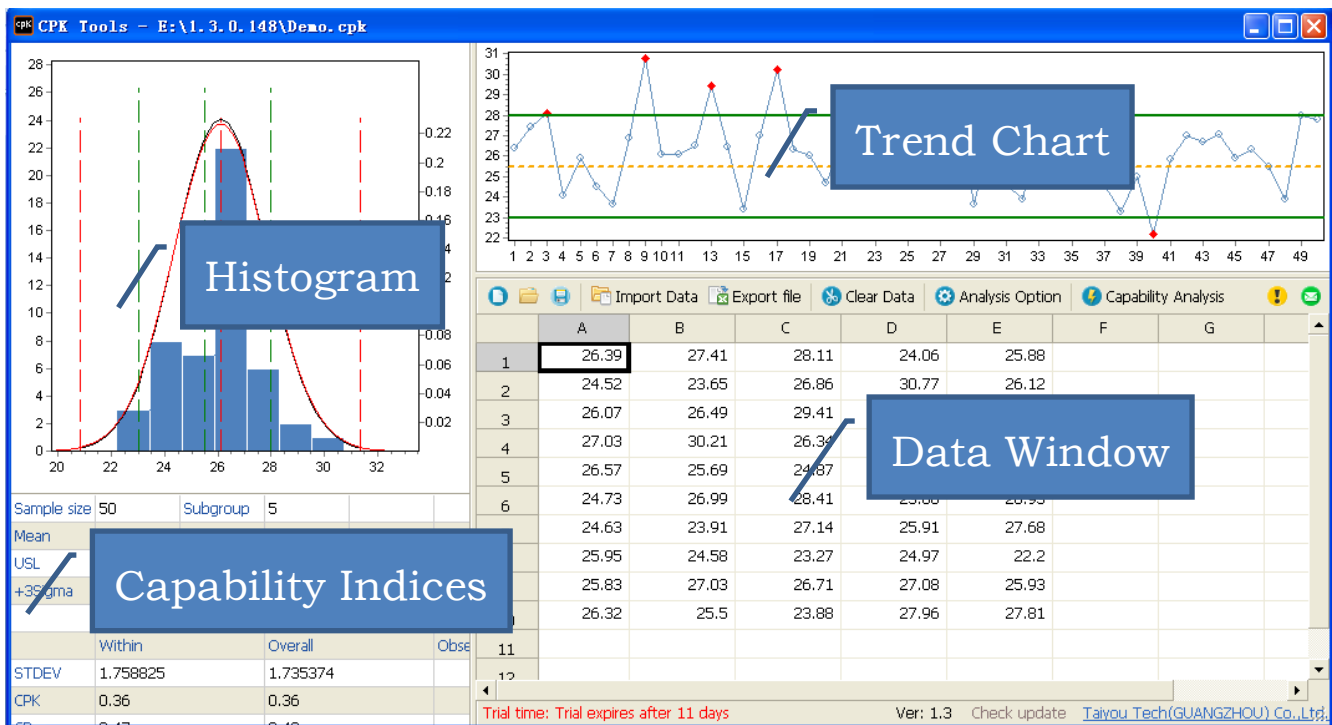
2. SOFTWARE INSTALLATION

After download, no installation is needed. The compressed file includes five files ,user can double click the setup file to run the CPK TOOL;



3. CPK TOOL FEATURES

3.1 CPK Tool Layout

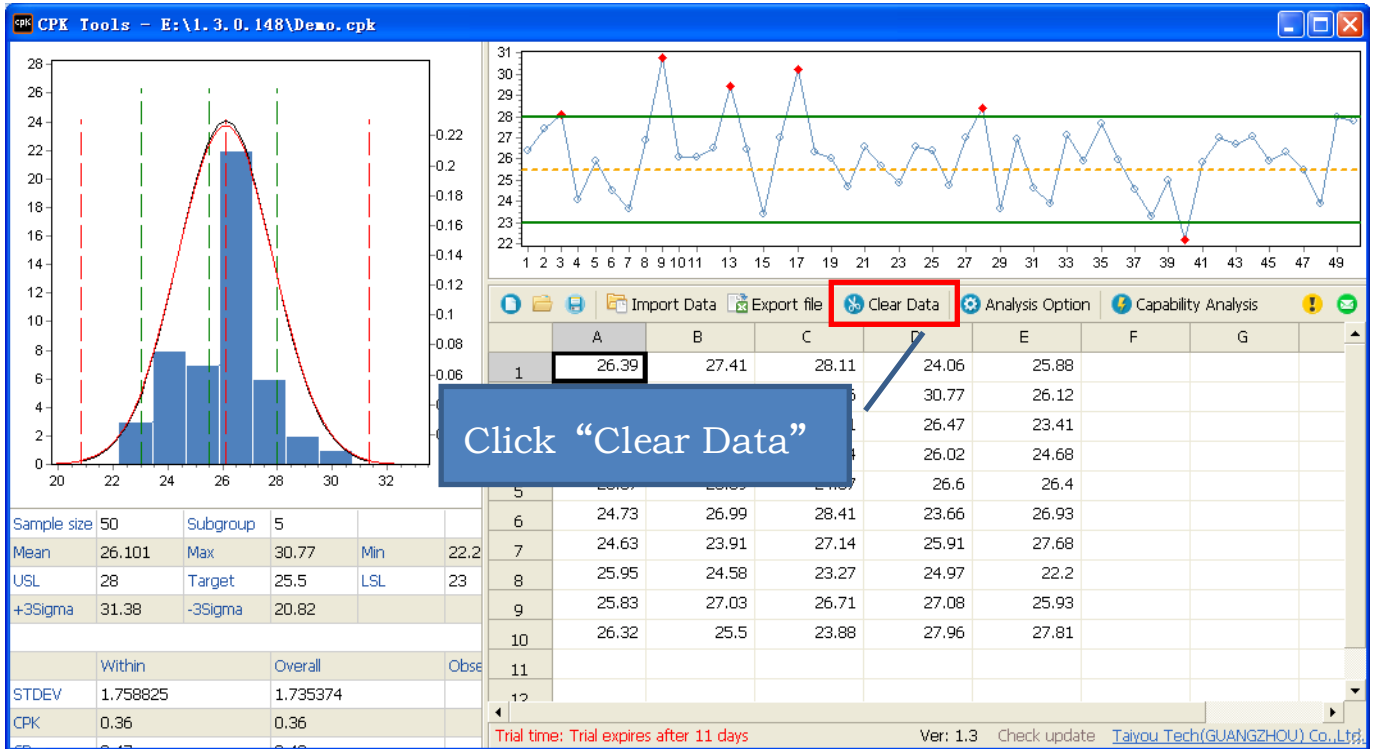


3.2 Data Entry

User can input the data in data window, and also can copy the data from Excel file

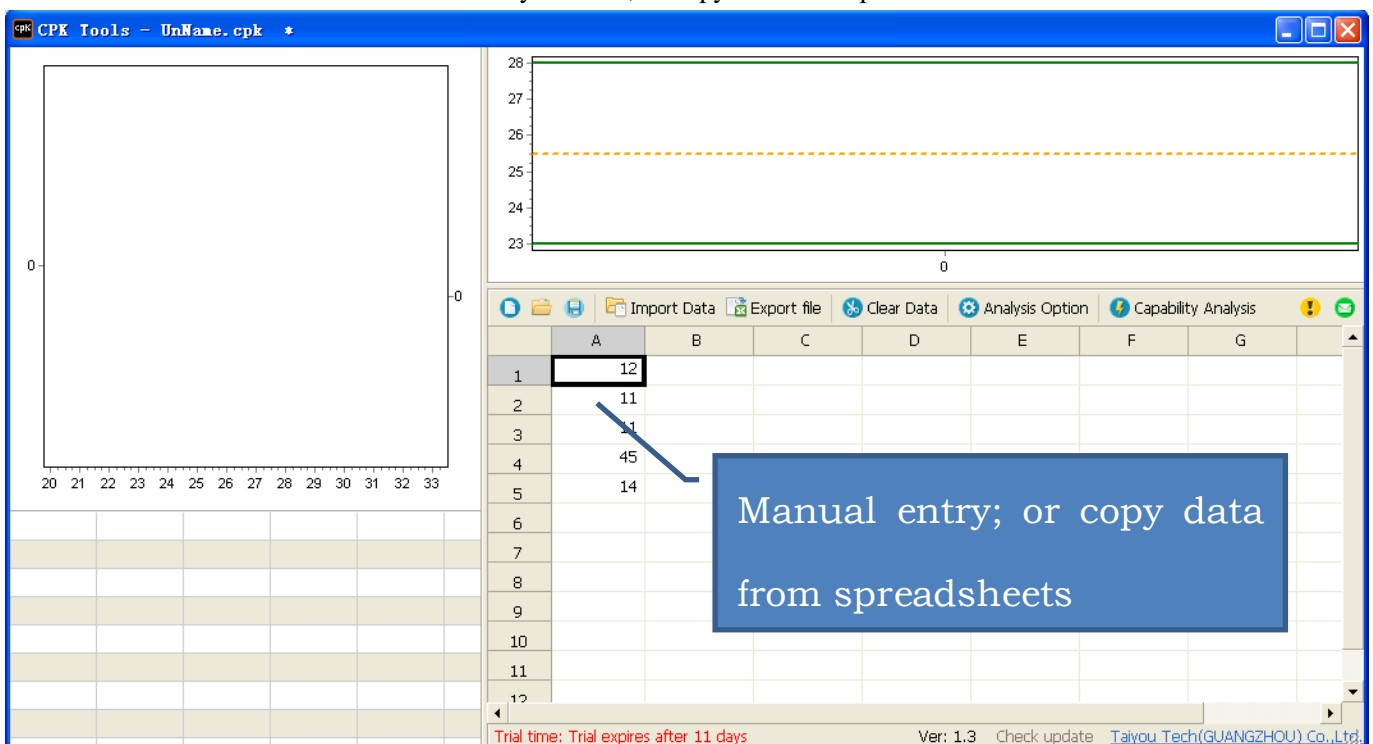
3.2.1 Clear Data

Click “Clear Data”, user can clear the data in data window



3.2.2 Data Entry

3.2.2.1 Users can manual entry the data, or copy data from spreadsheets



3.2.2.2 Users can import data from spreadsheets

Click "Import Data" to import data from spreadsheets

| Sample size | 50 | Subgroup | 5 | | |
|-------------|--------|----------|-------|-----|------|
| Mean | 26.101 | Max | 30.77 | Min | 22.2 |
| USL | 28 | Target | 25.5 | LSL | 23 |
| +3Sigma | 31.38 | -3Sigma | 20.82 | | |

| | A | B | C | D | E | F | G |
|---|-------|-------|-------|-------|-------|---|---|
| 1 | 26.39 | 27.41 | 28.11 | 24.06 | 25.88 | | |
| 2 | 24.52 | 23.65 | 26.86 | 30.77 | 26.12 | | |
| 3 | 26.07 | 26.49 | 29.41 | 26.47 | 23.41 | | |
| 4 | 27.03 | | | | | | |
| 5 | 26.57 | | | | | | |
| 6 | 24.73 | | | | | | |
| 7 | 24.63 | | | | | | |
| 8 | 25.95 | | | | | | |

3.3 Capability Analysis

3.3.1 Analysis Option

Click the "Analysis Option" to set up the specification and set preferences for the estimation of σ .

Click "Analysis Option"

| Sample size | 50 | Subgroup | 5 | | |
|-------------|--------|----------|-------|-----|------|
| Mean | 26.101 | Max | 30.77 | Min | 22.2 |
| USL | 28 | Target | 25.5 | LSL | 23 |
| +3Sigma | 31.38 | -3Sigma | 20.82 | | |

| | A | B | C | D | E | F | G |
|---|-------|-------|-------|-------|-------|---|---|
| 1 | 26.39 | 27.41 | 28.11 | 24.06 | 25.88 | | |
| 2 | 24.52 | 23.65 | 26.86 | 30.77 | 26.12 | | |
| 3 | 26.07 | 26.49 | 29.41 | 26.47 | 23.41 | | |
| 4 | 27.03 | | | | | | |
| 5 | 26.57 | | | | | | |
| 6 | 24.73 | 26.99 | 28.41 | 23.66 | 26.93 | | |
| 7 | 24.63 | 23.91 | 27.14 | 25.91 | 27.68 | | |
| 8 | 25.95 | 24.58 | 23.27 | 24.97 | 22.2 | | |

Analysis Option

Analysis

Specification Setting

Upper spec 28 Target 25.5 Lower spec 23

Sample View

Decimal Places: 2

Capability Analysis

Subgroup size: 5 No. of cells 0 Remark: Automatic calculate when the value is 0

Methods of estimating standard deviation: Sbar Rbar
 Pooled standard deviation

Remark: When Subgroup size is 1, Rbar method will be used for standard deviation estimating.

Language: Chinese(Simplified) English

OK Cancel

Specification Setting: Enter the Lower Specification and Upper Specification

Decimal Places: The position of a digit to the right of a decimal point

Subgroup size: Enter the subgroup size

No. of cells: The number of intervals in histogram

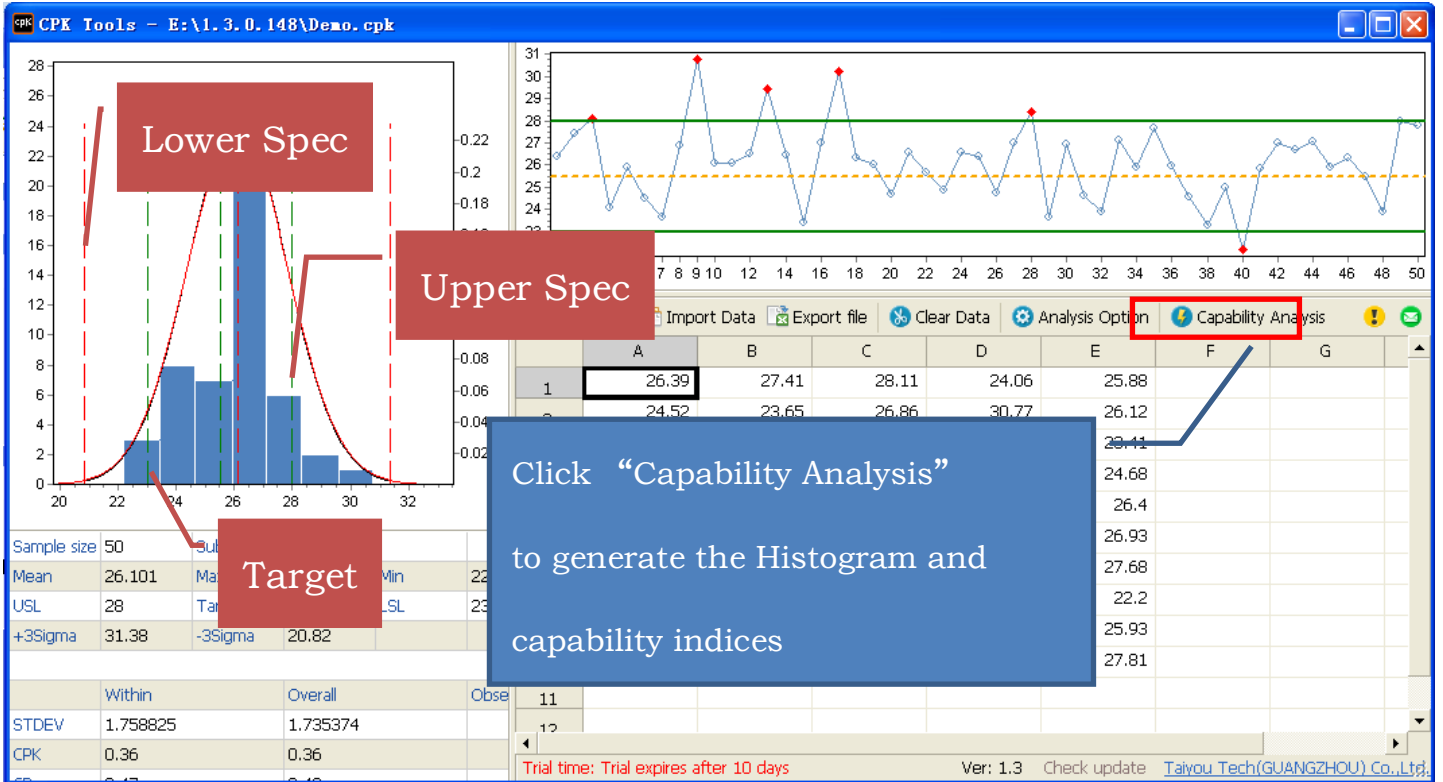
Methods of estimating standard deviation:

Sbar: Choose to estimate standard deviation using the average of the subgroup standard deviations (the default).

Rbar: Choose to estimate standard deviation using the average of the subgroup ranges.

Pooled standard deviation: Choose to estimate standard deviation using a pooled standard deviation.

3.3.2 Histogram

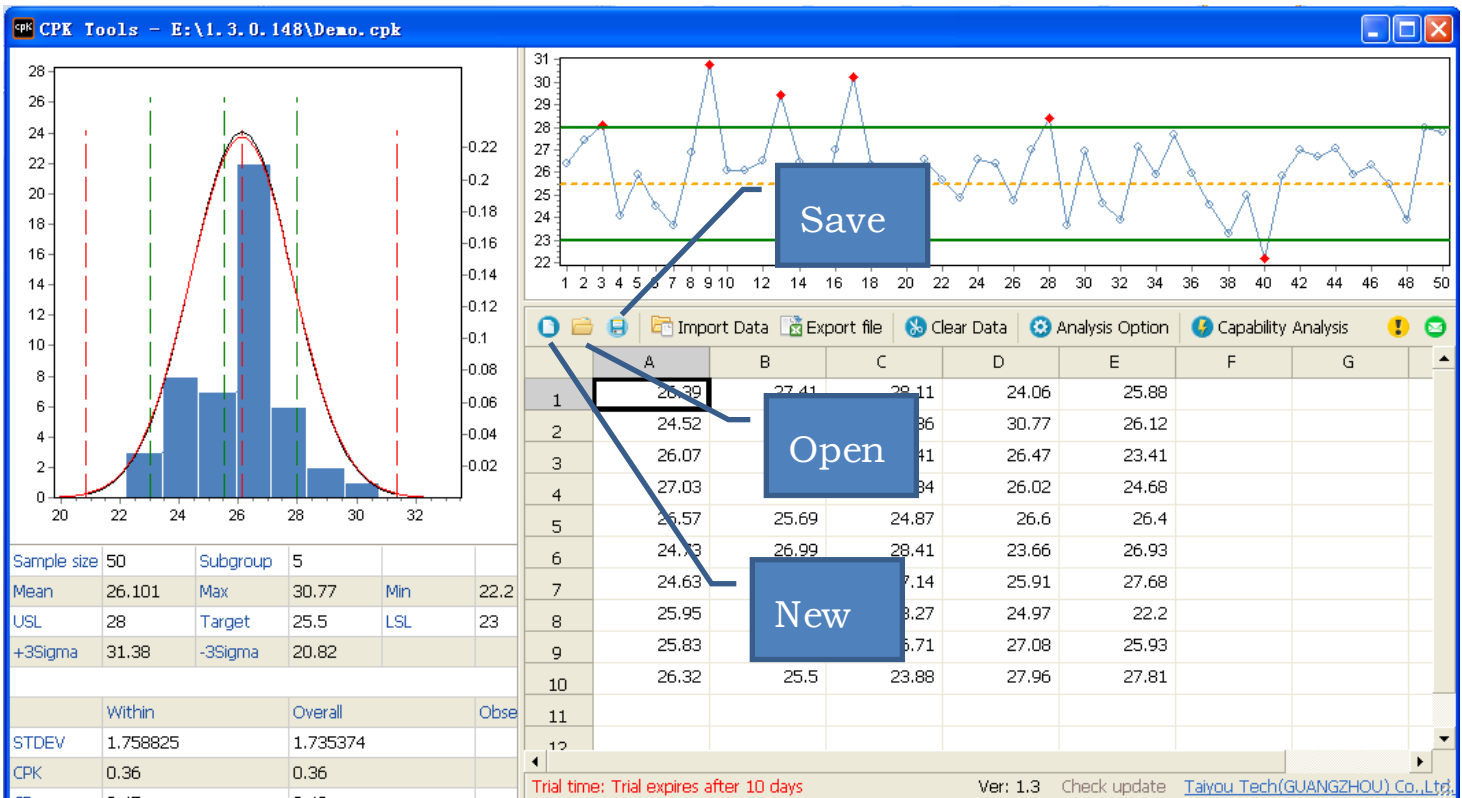


3.4 New, Open and Save File

New: User can create a new CPK file

Open: User can open an existing CPK file

Save: User can save the current file in a CPK file



3.5 Generating a Report

CPK Tools - E:\1.3.0.148\Demo.cpk

Click "Export file" to generate a report in an Excel file

| | A | B | D | E | F | G |
|----|-------|-------|-------|-------|-------|---|
| 1 | 26.39 | 27.41 | 28.11 | 24.06 | 25.88 | |
| 2 | 24.52 | 23.65 | 26.86 | 30.77 | 26.12 | |
| 3 | 24.99 | 29.41 | 26.47 | 23.41 | | |
| 4 | 21.69 | 26.34 | 26.02 | 24.68 | | |
| 5 | 26.69 | 24.87 | 26.6 | 26.4 | | |
| 6 | 29.99 | 28.41 | 23.66 | 26.93 | | |
| 7 | 29.91 | 27.14 | 25.91 | 27.68 | | |
| 8 | 25.58 | 23.27 | 24.97 | 22.2 | | |
| 9 | 25.83 | 27.03 | 26.71 | 27.08 | 25.93 | |
| 10 | 26.32 | 25.5 | 23.88 | 27.96 | 27.81 | |
| 11 | | | | | | |
| 12 | | | | | | |

Sample size 50
 Mean 26.6
 USL 28
 +3Sigma 31.38 -3Sigma 20.82

STDEV 1.758825 Within Overall Observed
 1.735374

CPK 0.36 0.36

Trial time: Trial expires after 10 days Ver: 1.3 Check update Taiyou Tech(GUANGZHOU) Co.,Ltd.

3.6 About CPK Tool

Click the button, will get the CPK Tool version information

CPK Tools - E:\1.3.0.148\Demo.cpk

CPK Tools

Copyright © 2004-2012 Smartspec. All Rights Reserved
 Home Page: <http://www.smartspec.com>

Clear Data


| | D |
|----|-------|
| 11 | 24.06 |
| 36 | 30.77 |
| 41 | 26.47 |
| 34 | 26.02 |
| 37 | 26.6 |
| 41 | 23.66 |
| 14 | 25.91 |
| 27 | 24.97 |
| 71 | 27.08 |

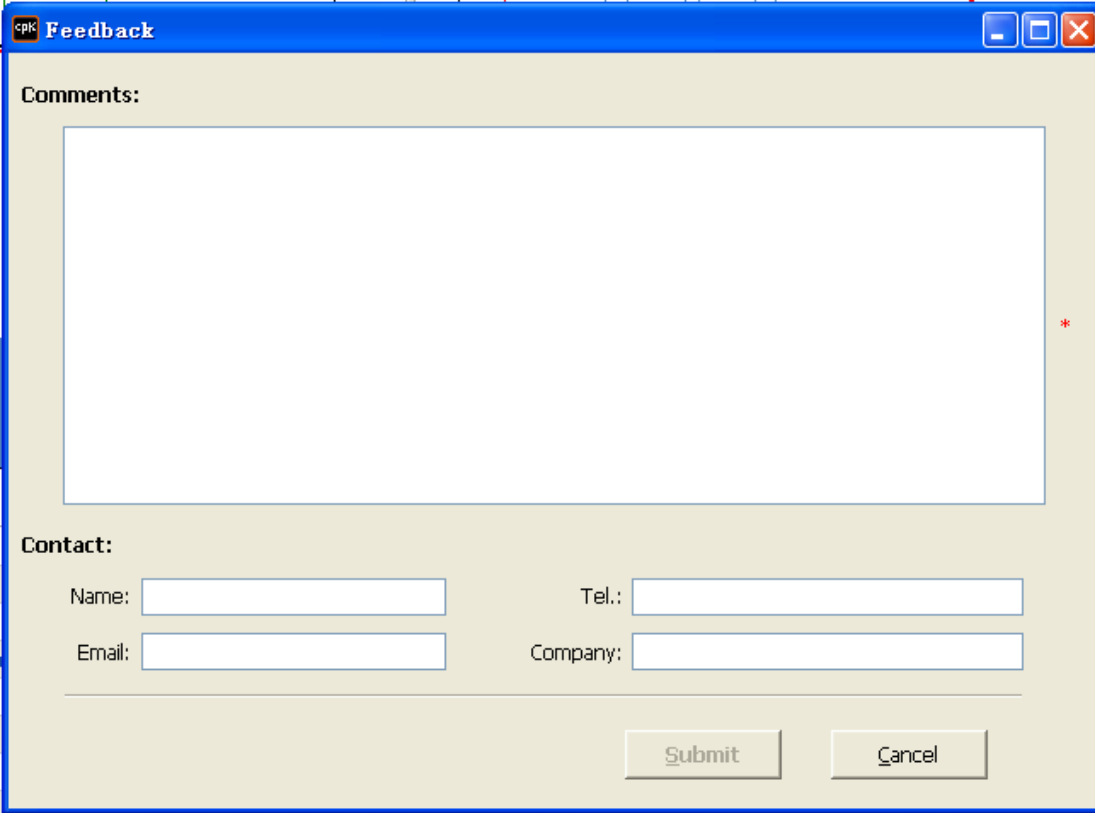
Sample size 50 Subgroup 5
 Mean 26.101 Max 30.77 Min
 USL 28 Target 25.5 LSL
 +3Sigma 31.38 -3Sigma 20.82

Within Overall Observed

Trial time: Trial expires after 10 days Ver: 1.3 Check update Taiyou Tech(GUANGZHOU) Co.,Ltd.

4. GETTING HELP

User can click “” button to send mail to support@smartspc.com for help



The image shows a 'Feedback' window with a blue title bar and standard window controls. The form is divided into two main sections: 'Comments' and 'Contact'. The 'Comments' section features a large, empty text area. The 'Contact' section contains four input fields: 'Name', 'Tel.', 'Email', and 'Company'. At the bottom of the form are two buttons: 'Submit' and 'Cancel'.

Feedback

Comments:

Contact:

Name: Tel.:

Email: Company: